

7082

Wireless Optiscan

2014-06-05 - V1.0



User Manual

General:

This wireless Optiscan detects when a person intends to leave the bed. This Optiscan works in combination with the Daza receivers and the Daza pagers.

Installation and use:

Place the sensor on the floor, facing the bed (figure 1). Make sure that the sensor is placed safely where it can cause no harm to the inhabitant, for example underneath a chair or table. **It is highly preferable to place it at a distance of at least 2 meters from the bed.** The sensor has a 90 degrees field of view over a distance of approximate 7 meter. Make sure that no objects are in front of the sensor that can block its view (figure 2).



Figure 1: Sensor placement

Switching on:

1. The sensor is always on, you need to switch on the receiver in order to receive the alarms (see manual receiver).
2. Leave the room.
3. The sensor switches itself on automatically once **no** movement across the floor has been detected for fifteen seconds.



Figure 2: Viewing angle sensor

Switching off:

1. Walk into the room and switch the receiver off.
2. If applicable, reset the alarm on the nurse call system.

Serial number / set indication:

On the bottom of the Optiscan is a sticker with the serial number of the Optiscan (figure 3). You can also mark a combination of a letter and a number which you can also mark on the sticker of the receiver. In that way you know what Optiscan and receiver is a set that works together.

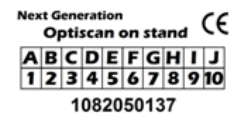


Figure 3: Serial number

7082

Wireless Optiscan

2014-06-05 - V1.0



User Manual

Battery empty warning:

When the Optiscan battery is almost empty the LED behind the Optiscan lens blinks red every 5 seconds

Battery replacement:

Only replace this with a 3.6 volt lithium cell of size 2/3 AA.

Correct operation can only be guaranteed when an original battery of the brand Saft, type LS17330 is used (Daza partnumber 7083).

Remove the 4 screws on the rear of the Optiscan housing. Replace the battery in accordance with Fig. 4. Please note: Plus (+) pole on the right side. After closing the Optiscan the sensor will require some time to calibrate. This is shown by the frequently illumination of the green LED behind the lens.

NEVER TOUCH THE ELEMENT IN THE SENSOR!

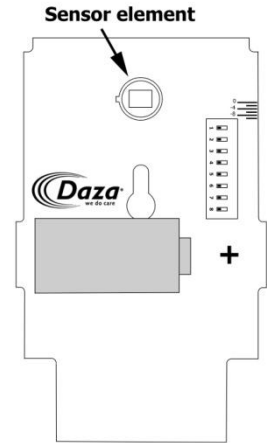


Figure 4: Battery placement

Entrance delay.

Standard between the detection of a movement and a transmission is a delay of 1 sec. This delay gives you the time to switch off the receiver so that no alarm is received.

It is possible to change this time into 3, 5 or 10 seconds.

You can do this by changing dipswitch 1 and/or 2.



1 second (default)



3 seconds

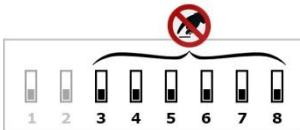


5 seconds



10 seconds

Factory default settings



Switch 3 to 8 should **NEVER** be changed!!

When changes are made, correct operation of the sensor can NOT be guaranteed.