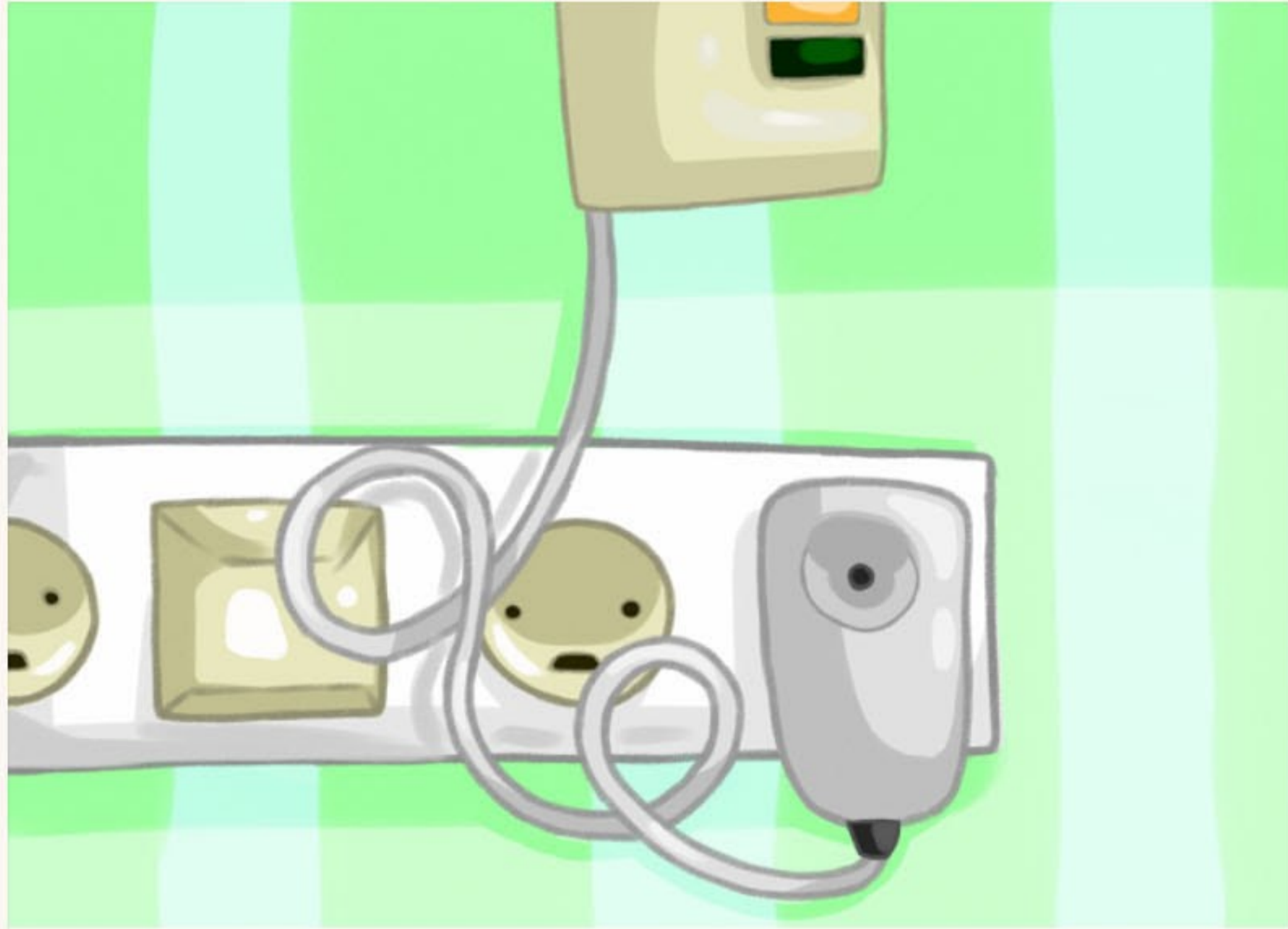


Installation and use

Optiscan



Connect the receiver to the nurse call system.



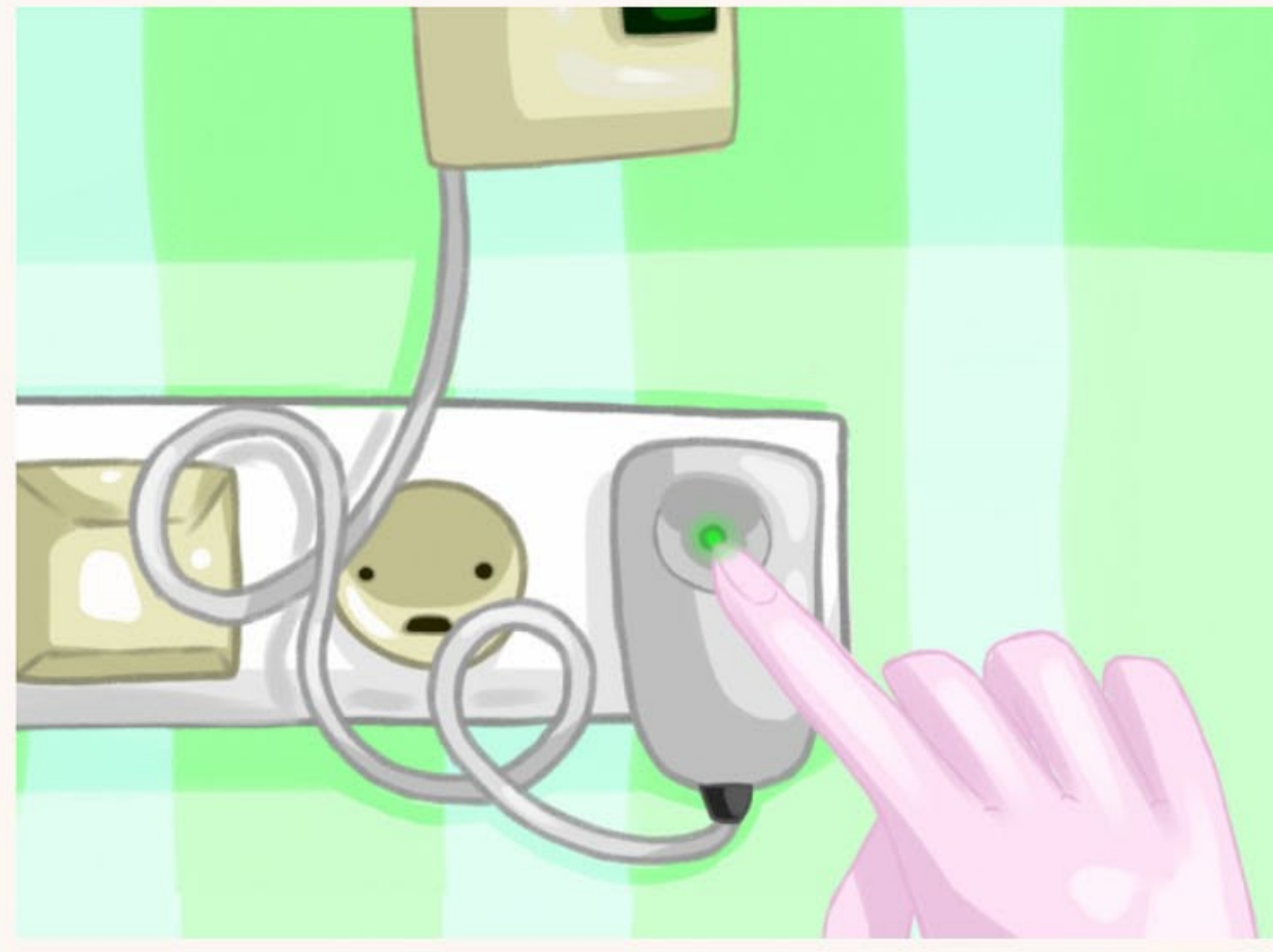
Position the Optiscan on the floor at a safe place



for example, underneath a chair, looking towards the bed.



When the person is lying in bed,



the receiver can be turned on when leaving the room.



As soon as the person is trying to get out of bed,



an alarm will be transmitted by the Optiscan



and the caregiver will be notified,



who can quickly get on site to assist.